



MATERIALS

Bernat® Blanket Ombre™ (10.5 oz/300 g; 220 yds/201 m)
Eggplant Ombre (36004) **4 balls or 814 yds/ 744 m**
Size U.S. 11 [8 mm] knitting needle 36" [91.5 cm] long **or size needed to obtain gauge.** Cable needle.



KNIT | SKILL LEVEL: **INTERMEDIATE**

ABBREVIATIONS

Alt = Alternate

Approx = Approximately

Beg = Begin(ning)

C4B = Slip next 2 stitches onto cable needle and leave at back of work. K2, then K2 from cable needle

C4F = Slip next 2 stitches onto cable needle and leave at front of work. K2, then K2 from cable needle

Cont = Continue(ity)

Dec = Decrease(ing)

Inc = Increase(ing)

K = Knit

Kfb = Increase 1 stitch by knitting into front and back of next stitch

K2tog = Knit next 2 stitches together

Pat = Pattern

P = Purl

Rep = Repeat

RS = Right side

St(s) = Stitches

WS = Wrong side

MEASUREMENTS

Approx 53" x 58" [134.5 x 147.5 cm].

GAUGE

8 sts and 13 rows in stocking st.

INSTRUCTIONS

Cast on 105 sts.

1st row: (RS). K3. *P3. K3. Rep from * to end of row.

2nd row: P3. *K3. P3. Rep from * to end of row.

Rep last 2 rows (K3. P3) ribbing for 3" [7.5 cm], ending on a RS row.

Next row: (Inc row – WS). P3. (K3. P3) twice. *Kfb. K2. P3. K3. P3. Rep from * to last 6 sts. K3. P3. 112 sts.

1st row: (RS). K6. C4B. *K4. C4B. Rep from * to last 6 sts. K6.

2nd and alt rows: K3. Purl to last 3 sts. K3.

BERNAT® FADING CABLES KNIT BLANKET | KNIT

3rd row: K4. C4B. C4F. *K8. C4B. C4F. Rep from * to last 4 sts. K4.

5th row: Knit.

7th row: K4. C4F. C4B. *K8. C4F. C4B. Rep from * to last 4 sts. K4.

9th row: As 1st row.

11th row: K12. *C4B. C4F. K8. Rep from * to last 4 sts. K4.

13th row: Knit.

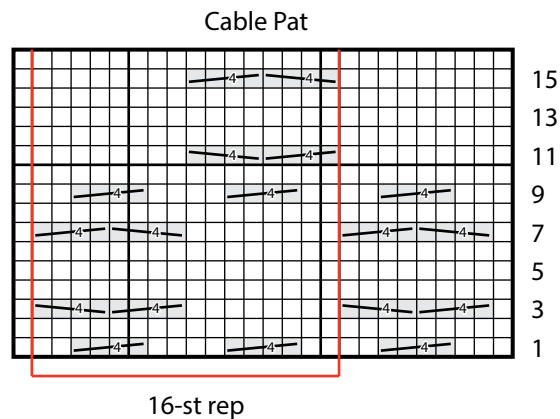
15th row: K12. *C4F. C4B. K8. Rep from * to last 4 sts. K4.

16th row: K3. Purl to last 3 sts. K3. These 16 rows form cable pat.

Cont in pat until work from beg measures approx 55" [139.5 cm], ending on a 7th or 15th row.

Next row: (Dec row – WS). P3. (K3. P3) twice. *K2tog. K2. P3. K3. P3. Rep from * to last 6 sts. K3. P3. 105 sts.

Beg on a 1st row, work 3" [7.5 cm] in (K3. P3) ribbing, ending on a WS row. Cast off in ribbing.



- = Knit on RS; Purl on WS
- ▤ = C4B
- ▥ = C4F

